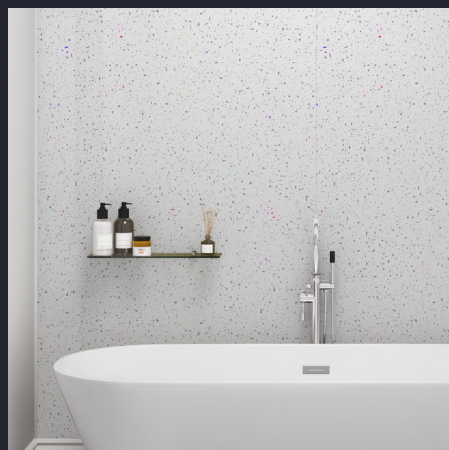




IDSurfaces®

CONTRACT SURFACE SOLUTIONS

WALL & CEILING PANELLING
WORKTOPS
FLOORING





IDSurfaces is the **UK's largest manufacturer and distributor of decorative surfaces**, including wall panelling, flooring, worktops, laminates, compact, panel products and solid surface.

Our vision is to engage customers proactively with our specialist knowledge, offering a leading range of surface solutions with tailored delivery and service excellence.

Our core values include environmental awareness, implementing policies and behaviours that positively impact social, environmental, and governance issues; teamwork, fostering cohesive collaboration with kindness and respect to achieve goals; health and safety, ensuring the well-being and safety of our workforce, and those around us; innovation, driving continuous improvement in our products, service, and sustainability efforts; and customer service, placing customers at the heart of everything we do.

By adhering to these values, **IDSurfaces** aims to build strong, lasting relationships, leading the industry with integrity and excellence.



IN-DEPTH RESOURCES

As experts in global sourcing, our product portfolio is unparalleled, offering the most comprehensive choice of specialist products from the biggest brands in the industry. With a stockholding of over 12,000 product lines, our nationwide network ensures immediate access to the surfaces you need, when you need them. A depth of stock is supported by our 12 regional depots which enables us to fulfil your requirements throughout the procurement process.

MANUFACTURING INNOVATION

Wall panels are a rapidly growing market, as clients and end users seek a faster, more flexible and lower maintenance alternative to tiles. Showerwall is leading this change. As the manufacturer of Showerwall, **IDSurfaces** utilise the latest equipment and production techniques to provide a technically strong and high-quality finished product. Our factory is centrally located in Stoke-On-Trent, and our integrated logistics operation guarantees continuity of supply.

SUSTAINABLE SOLUTIONS



When you buy from **IDSurfaces**, you can be confident that you are trading in goods from legal, ethical, and sustainable sources. All our wood-based products are EUTR compliant, and 80% are either FSC® or PEFC™ Certified. We have held Chain of Custody since 2005 and offer certified FSC® or PEFC™ options across each of our main product areas, guaranteeing that the timber used is harvested from responsibly managed forests and other controlled sources. By purchasing such products you are supporting sustainable forest management worldwide.

The **IDSurfaces** Head Office and Showerwall production premises is a sustainable facility, featuring solar panels, LED and passive lighting, electric vehicle charging points and it is powered by renewable energy. We operate electric manual handling equipment and EV charging points across all our estate. In addition, highly efficient route planning of our vehicles keeps carbon emissions as low as possible, and we recycle and bale cardboard, plastic, and timber across all our sites to minimise waste to landfill.



OUTSTANDING SERVICE



IDSurfaces offer new and exciting products from leading brands, as well as providing value added services such as bespoke digital print and a speedy sample service. We pride ourselves on being able to offer our partners significant competitive advantage through use of our flexible distribution network and exclusive access to some of the most innovative and high-quality products on the market.

Our unrivalled product choice is further enhanced by our dedicated product specialists and professional sales teams. Together they offer expertise accessible to **IDSurfaces** customers that is unsurpassed. Our aim is to deliver genuine value to our partners, offering a personalised service, advice, and support.

Our continuity of supply is guaranteed by our extensive supply chain experience and substantial stock levels. From point of order to best-in class product packaging, our sample and aftersales service ensures satisfaction, every time.

We're easy to do business with, saving time and improving our customers' productivity and efficiency. Delivering the surfaces you need when you need them.

At **IDSurfaces** it's simple:

- One point of contact.
- One phone call.
- One order.
- One delivery.
- One invoice.

At **IDSurfaces** we understand the specific needs of various sectors, providing quality products that address key issues, offering low maintenance solutions that provide longevity. Our sustainable products enhance cleaning efficiency too, helping you to maximise profits.

Listed here are some of the sectors we support with our unrivalled range of surface solutions.

SOCIAL HOUSING



We assist the Social Housing sector by providing Local Authorities and Frameworks with value-added products, ensuring environments are specified correctly, while national builder's merchants stock and supply the products on time and in full. Our easy-to-clean and hygienic solutions address mould and damp issues, reducing repair and maintenance timescales and lowering costs. Additionally, our products are designed to be simply fit and forget, with minimal ongoing maintenance required.

This means that tenants receive the most suitable products for their homes, offering the safest and most cost-effective solutions. We support frameworks with new product initiatives, making homes safer and more decent while keeping business costs low to maximise profits.

STUDENT ACCOMMODATION



Our products are designed to help student accommodation providers and letting agencies lease properties with minimal disruption and repairs. By offering value-added solutions, we significantly reduce installation times and the need for frequent repairs, ensuring that our products are easy to fit and require minimal ongoing maintenance. This facilitates quick tenant turnarounds with minimal investment, allowing businesses to focus on cleaning rather than replacement.

For example, solutions such as Showerwall instead of traditional tiles and repairable worktops are specifically chosen to help maintain low business costs while maximising profits. These innovations not only simplify the installation process but extend the lifespan of the property's fixtures, reducing the need for costly renovations and replacements. By prioritising durability and ease of maintenance, our products ensure more efficient and profitable operations.



IDSurfaces®

INDEPENDENT LIVING

HOTELS

OFF-SITE & MODULAR



We offer safe solutions for local authorities and sheltered housing to ensure the well-being of their residents. Tenants can maintain their independence too with easy-to-clean and hygienic products. Our fit-for-use solutions include robust wall panels for housing, handrails and seating, as well as slip-resistant flooring.

Local authorities and occupational therapists can choose tailored products, making sheltered housing safer and more cost-effective while fostering innovation and reducing business costs.

We understand that hotels aim to offer unique, design-led experiences for their guests. Our easy-to-clean, hygienic products ensure a pristine environment. With repairable solutions that reduce build and repair downtime, we help maintain a seamless, aesthetically pleasing atmosphere.

Our design-driven approach guarantees that every element looks impeccable and functions flawlessly. From bespoke, stylish, low-maintenance surfaces to repairable fixtures, our solutions enable hotels to create memorable spaces, leaving a lasting impression on guests while optimising maintenance and operational efficiency.

In the modular and off-site construction sector, our products are designed to create custom-use units and to develop safer methods for building and transporting them using lightweight solutions. We help streamline your supply chain by sourcing products nationally and competitively, eliminating the need for you to hold stock and reducing build time with a moisture-resistant wall system that is quicker to install, clean, and does not require grout. Our sustainable products provide safe and cost-effective solutions. Ongoing investment and new product development keep business costs low and maximise profit.

LAMINATE WALL PANELS



SHOWERWALL LAMINATE



Showerswall Laminate panels include tile designs with realistic grout lines, and range from luxuriously veined marbles to earthy stones and shimmering quartz, offering gloss, matt, tactile and uniquely synchronised texture finishes.

Fast and easy to install, Laminate panels do not require wet trades, providing a cost-effective solution that can be fitted directly over tiles. Hygienic and easy to clean too, this solid grout-free surface eliminates hiding places for mould, dirt or germs; a simple wipe-clean solution.

These wall panels are available with Exterior Grade MDF or Plywood core boards which are FSC® and PEFC® certified.



PRODUCT HIGHLIGHTS

- 100% Waterproof System – to ensure a watertight finish laminate panels require trims for all outer edges, internal and external corners.
- Choose from Square Cut or Proclick panels - a mechanical locking system that provides seamless, almost invisible joints, negating the need for joining trims.
- Fast and easy installation – can be fit directly over existing tiles.
- Trims are available in 5 different finishes, Bright Silver, Satin Silver, White Gloss, Black Silk and Antique Gold.
- Fit and forget using the only maintenance-free shower seal on the market with no future resealing required. At the base of the Showerswall panel, even greater sealing performance is achieved using Sureseal, this four point sealing system is available in black, white, and satin silver.
- Square cut panels measure 900mm or 1200mm wide, by 2440mm high.
- Proclick panels measure 579mm or 1179mm wide, by 2440mm high.
- Tile panels measure 600mm wide, by 2400mm high.
- 30 year guarantee for domestic use.



ACRYLIC WALL PANELS



SHOWERWALL ACRYLIC

The sleek finish of these acrylic panels are completely customisable and can be printed in any colour or image. Simply select a colour or supply an image of your choice and we'll create your bespoke shower panel.

The ultimate waterproof panelling, Showerwall Acrylic is designed to deliver a smooth, watertight finish whilst also being hard-wearing, stain resistant and totally hygienic.

Showerswall Acrylic panels are manufactured from a 4mm acrylic sheet that is rear printed to create a polished glass-like finish.

This unrivalled and stunning portfolio is categorised by 3 sub-ranges:

Solid Colours, Patterns, and Murals which create a real wow factor and enable designs up to 3600mm wide.

PRODUCT HIGHLIGHTS

- 100% waterproof material that does not require any trims, panels are simply joined together using Showerwall Sealant.
- Fast & easy installation - can be installed directly over existing tiles.
- Hygienic & easy to maintain – a solid surface with no grout lines that can simply be wiped clean.
- Acrylic panels measure 896mm or 1200mm wide, by 2400mm high.
- 30 year guarantee for domestic use.



COMPACT WALL PANELS



SHOWERWALL COMPACT



Showerswall's Compact panels offer 5 contemporary decors, taking inspiration from some of the most popular trends in bathroom design.

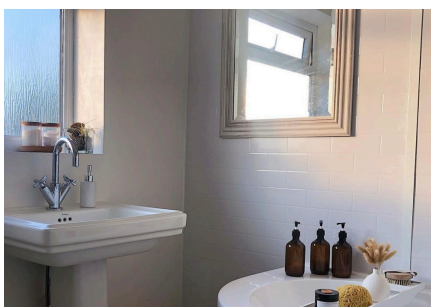
Embossed to create the real look and feel of tiles without the hassle of grout, these panels are easy to fit, reducing the fitting time compared with traditional tile products - and offer hygienic benefits as they are easy to clean and maintain.

Compact panels are manufactured from a strong 3mm solid composite laminate material with an embossed tile effect.



PRODUCT HIGHLIGHTS

- 100% Waterproof System – to ensure a watertight finish compact panels require trims for all joins and outer edge of panels, as well as internal and external corners.
- Trims are available in 4 different finishes, Chrome, Satin Silver, White, and Black.
- Fast and easy installation as no wet trades required, providing a cost-effective solution that can be fitted directly over tiles.
- Hygienic and easy to clean - a solid grout-free surface eliminating hiding places for mould, dirt or germs; a simple wipe-clean solution.
- Compact panels measure 1220mm wide, by 2440mm high.
- 30-year guarantee for domestic use.



PVC-U WALL & CEILING PANELS



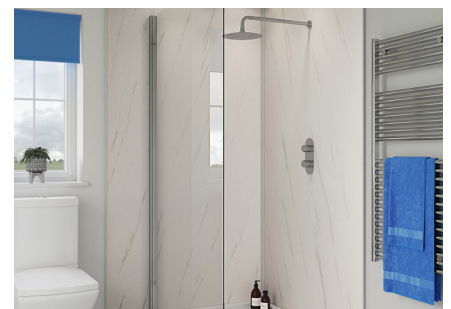
PANELSTYLE PVC

Panelstyle PVC wall and ceiling panelling is an attractive, cost-effective alternative to tiles, paint or wallpaper. Ideal for use in showers, bathrooms, and wet rooms, these easy fit 100% waterproof panels feature a durable structure, and are available in various thicknesses and widths, making them suitable for any project and budget.

The range is broken down into three main product areas: Designed for walls, Spalshpanel is perfect for showers, bathrooms and wetrooms; fast and easy to fit, Proplas Panelling is ideal for the walls and in some cases ceilings; Proplas Tile offers tile effect wall products, providing all the great looks of traditional tiling without the mess and maintenance.

PRODUCT HIGHLIGHTS

- 100% waterproof panels ideal for wet environments.
- Cost-effective solution compared to traditional tiles.
- Fast and easy installation with no wet trades required.
- Panels can be fixed over existing tiles, perfect for refurbishment or renovation projects.
- This grout-free and non-porous surface ensures a hygienic and easy-to-clean wall or ceiling covering that is resistant to mould, bacteria and stains.
- Complete with a full range of accessories including a choice of trims for a professional finish.
- Low, virtually maintenance-free product so you can fit and forget.
- 5-year domestic use warranty.



WORKTOPS



LAMINATE AND SOLID SURFACE



We have a comprehensive range of durable worktops, breakfast bars, upstands and splashbacks. With various sizes and thicknesses available, our laminate and solid surface ranges come in the latest designs and textures to suit any project. Laminate worktops are a robust and cost-effective solution, however, if you require a repairable and renewable worktop then solid surface may be the best option.

PRODUCT HIGHLIGHTS

Laminate Worktops

- Wide range of décor options to cater to every project requirement.
- Available in a choice of 22mm, 28mm and 38mm thickness, some of which feature impact-resistant edges for added durability.
- Choose from round or square edge.
- Anti-bacterial and easy to clean.
- FSC® and FIRA Gold certified.
- Manufactured in the UK.

Solid Surface Worktops

- Available in 15mm or 25 mm thickness.
- No specialist fitter or equipment required.
- Prefabricated features available shaving time off the installation.
- Imperceptible joints for a hygienic and seamless touch.
- Supplied ready for installation.
- 10-year manufacturing guarantee.





LAMINATE AND LVT

Our luxury vinyl tile and laminate flooring collection offers a solution suitable for any size project or specification. Our products are hardwearing and stain-proof, suitable for use with underfloor heating, and supported by matching installation accessories and complementary underlays. All products are easy to install and maintain, making them suitable for high traffic areas.

PRODUCT HIGHLIGHTS

Laminate Flooring

- Laminate flooring is designed with a wood core making it more sustainable.
- Range of wood effects spanning 8mm, 12mm, and 14mm thickness.
- Water resistant.
- Click system for a quick and easy installation.
- Up to 25 years residential and 10 year commercial warranties.

LVT Flooring

- LVT is made of multiple layers to improve durability and protect from wear and tear.
- Plank, herringbone or tile formats available.
- Choose from Click or Stickdown installation systems.
- Waterproof.
- Up to 25 years residential and 10 year commercial warranties.





IDSurfaces[®]

**Big on surfaces.
Big on stock.
Big on service.**



Chatham

01634 666613
chathamsales@idsurfaces.co.uk

Ely*

01353 645110
elysales@idsurfaces.co.uk

Exeter

01392 824452
exetersales@idsurfaces.co.uk

Gateshead

0191 491 7000
gatesheadsales@idsurfaces.co.uk

Leeds

0113 220 3900
leeds.sales@idsurfaces.co.uk

Norwich

01603 402133
norwichsales@idsurfaces.co.uk

Nuneaton

02476 325031
nuneatonsales@idsurfaces.co.uk

Rosyth

01383 421120
rosythsales@idsurfaces.co.uk

Stoke

01782 567222
stokesales@idsurfaces.co.uk

Swindon

01793 513181
swindonsales@idsurfaces.co.uk

Warrington*

01925 852200
warringtonsales@idsurfaces.co.uk

Woodford

0208 550 8899
woodfordsales@idsurfaces.co.uk

*Office only. No showroom

IDSurfaces.co.uk

